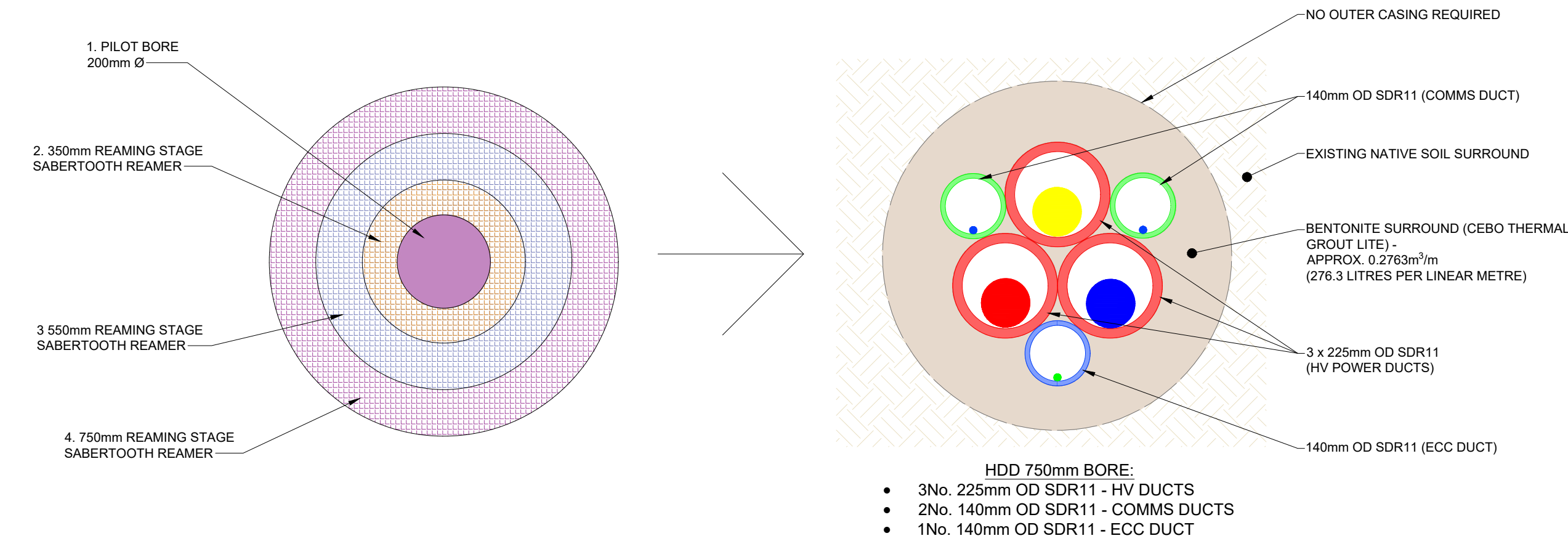


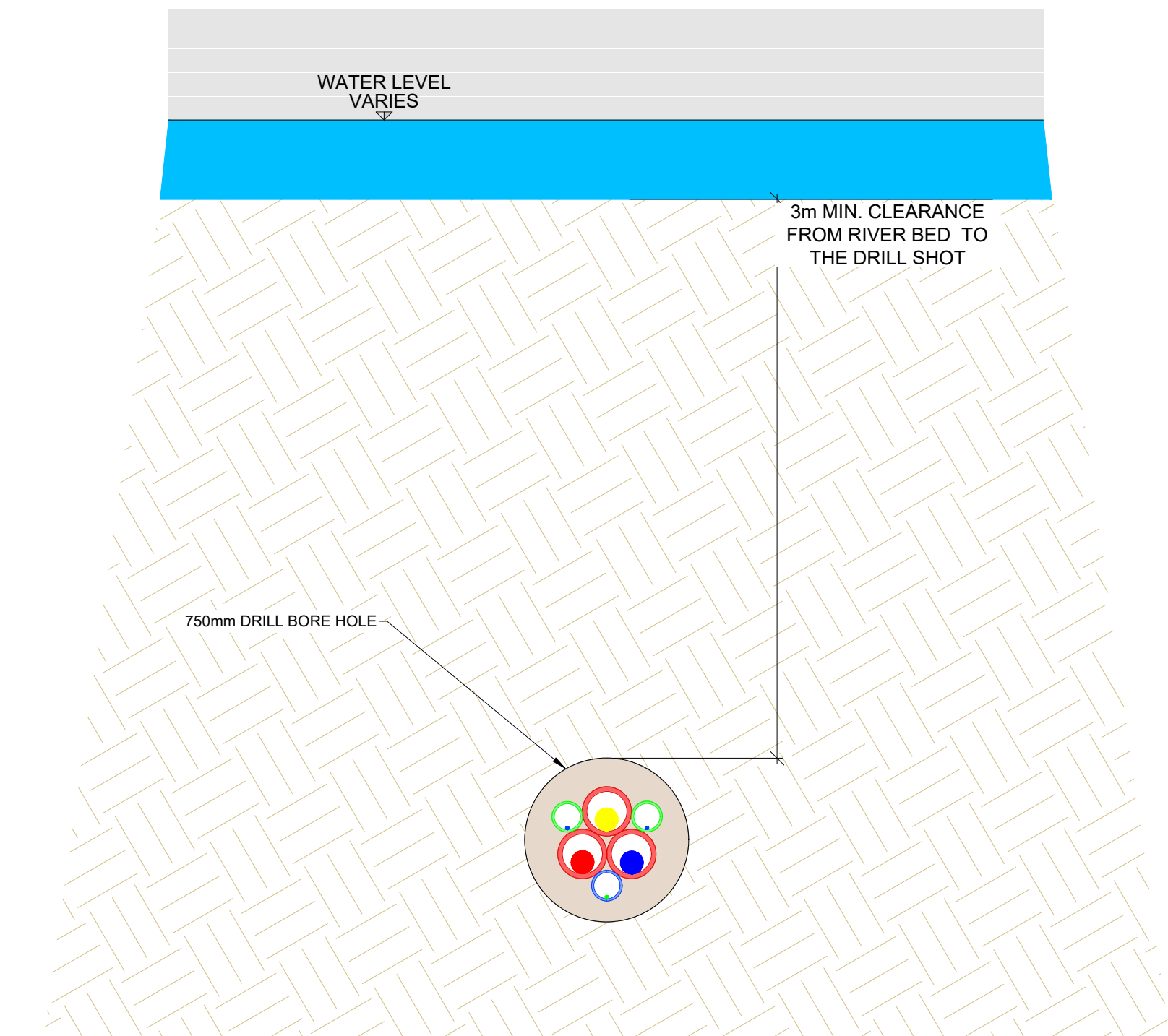
BOX CULVERT/BRIDGE ALONG PROPOSED OGC ROUTE

DIRECTIONAL DRILLING - VERTICAL PROFILE
SCALE 1:125



CONSTRUCTION PHASE - BORE SCHEDULE
SCALE 1: 10

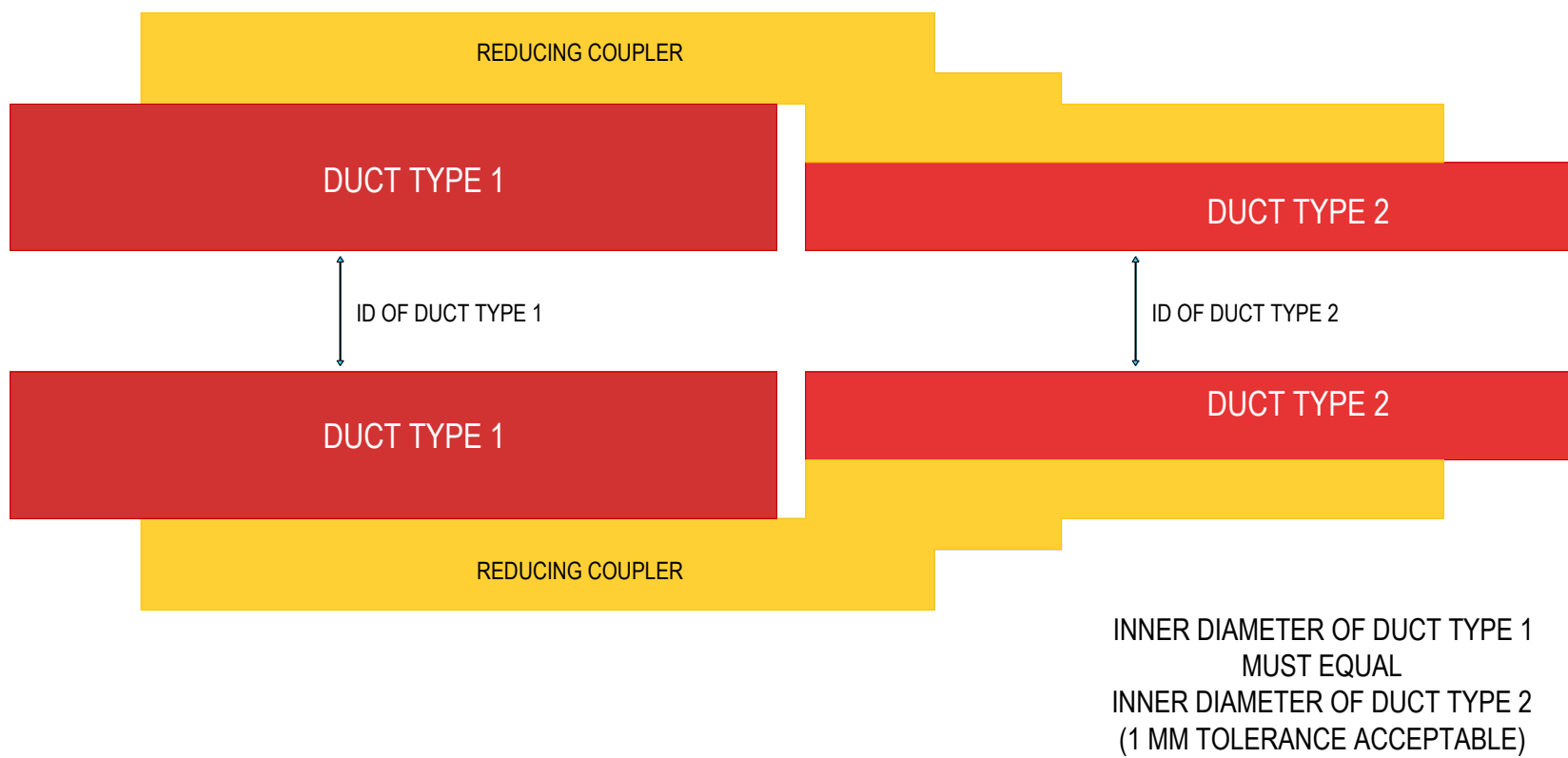
INSTALLATION AT START OF HDD BORE
SCALE 1: 10



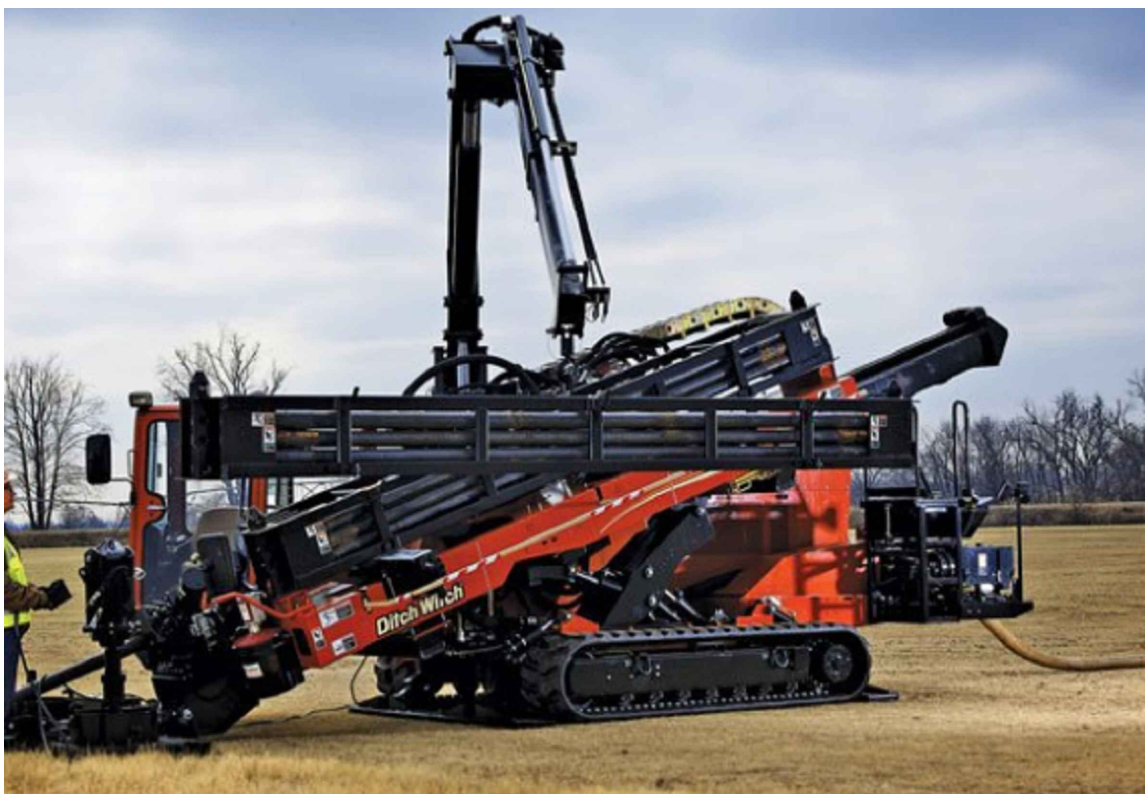
CROSS SECTION A-A
SCALE 1: 25

Table: Ducting Sizing

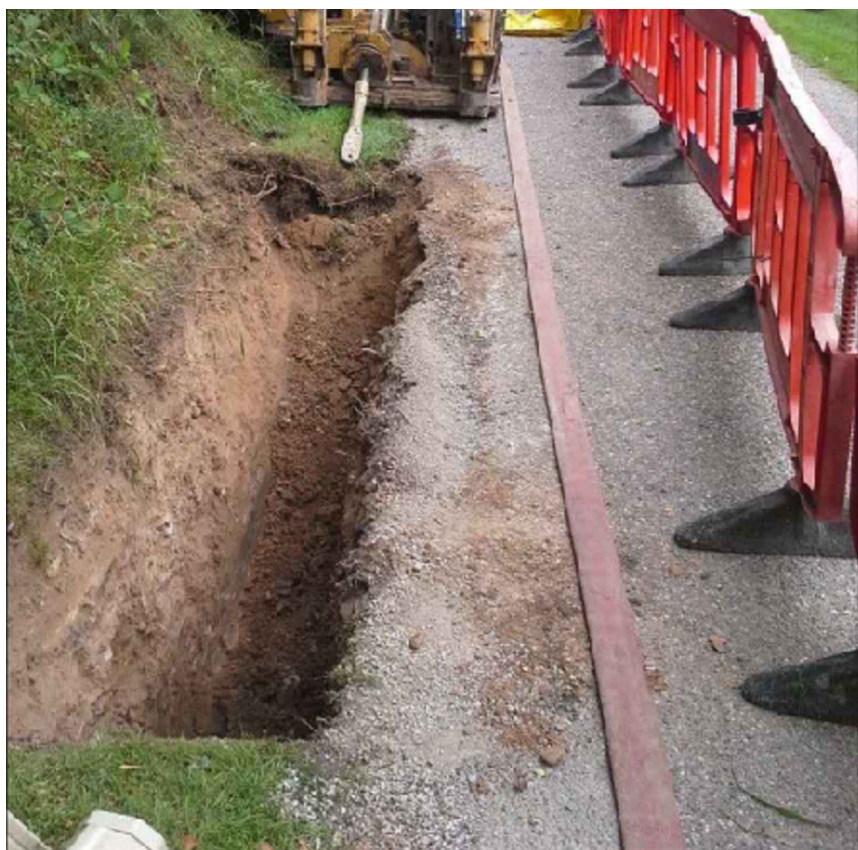
Duct Type 1 (HDD)	Duct Type 2 (Standard Trench)
225 mm SDR 11 HDPE	200 SDR 21 HDPE
140 mm SDR11 HDPE	125 mm SDR 17.6 HDPE



TRANSITION COUPLER DETAIL SECTION
SCALE NTS



TYPICAL DRILLING RIG



TYPICAL DRILLING RIG & LAUNCH PIT

DO NOT SCALE FROM THIS DRAWING. USE FIGURED DIMENSIONS IN ALL CASES. VERIFY DIMENSIONS ON SITE AND REPORT ANY DISCREPANCIES TO THE DESIGNERS IMMEDIATELY. THIS DRAWING TO BE READ IN CONJUNCTION WITH THE DESIGNERS @ THIS DRAWING IS COPYRIGHT AND MAY ONLY BE REPRODUCED WITH THE DESIGNERS PERMISSION.

NOTES

- ALL DRAWINGS ARE TO BE READ IN CONJUNCTION WITH ALL RELEVANT SPECIFICATIONS, BILLS OF QUANTITIES, ARCHITECTURAL, SERVICES AND ENGINEERING DRAWINGS.
- ALL LEVELS ARE IN METRES RELATED TO:
DATUM: ORDNANCE DATUM MALIN HEAD
REFERENCE SYSTEM: IRISH TRANSVERSE MERCATOR (ITM)
GEOID: OSGM15
- ALL DIMENSIONS ARE IN MILLIMETRES, UNLESS NOTED OTHERWISE.
- ANY DISCREPANCIES BETWEEN THESE DOCUMENTS SHALL BE BROUGHT TO THE ATTENTION OF THE ENGINEER.
- DRAWINGS ARE NOT TO BE SCALED.
- AERIAL IMAGERY, WHEN USED, IS SOURCED FROM MICROSOFT BING MAPS THROUGH THE OPEN LICENSING AGREEMENT WITH AUTODESK.
- ADDITIONAL ONE METRE ALLOWANCE FOR SEDIMENT OR CHANGING RIVERBED ALONG WITH 5% ALLOWANCE FOR THE ACCURACY OF THE HDD WALKOVER EQUIPMENT.

01	28/11/24	ISSUED FOR PLANNING	PD	CM
REV	DATE			

PROJECT: SCeirde Rocks Offshore Wind Farm

TITLE: HDD BOX CULVERT/BRIDGE CROSSING

CLIENT:

H&MV ENGINEERING
High Voltage Specialists

MWP
ENGINEERING AND ENVIRONMENTAL CONSULTANTS
CORK | TRALEE | LONDON | LIMERICK
mwp.ie

DRAWN: G.L.	CHECKED: M.M.	APPROVED: I.B.
PROJECT NUMBER: 24204	DATE: NOV. '24	SCALE @ A1: AS SHOWN
STATUS DESCRIPTION: FOR PLANNING		STATUS: S4

DRAWING NUMBER: IRE1-HMV-ONC-EL-PD-7007	REV: 01
---	---------